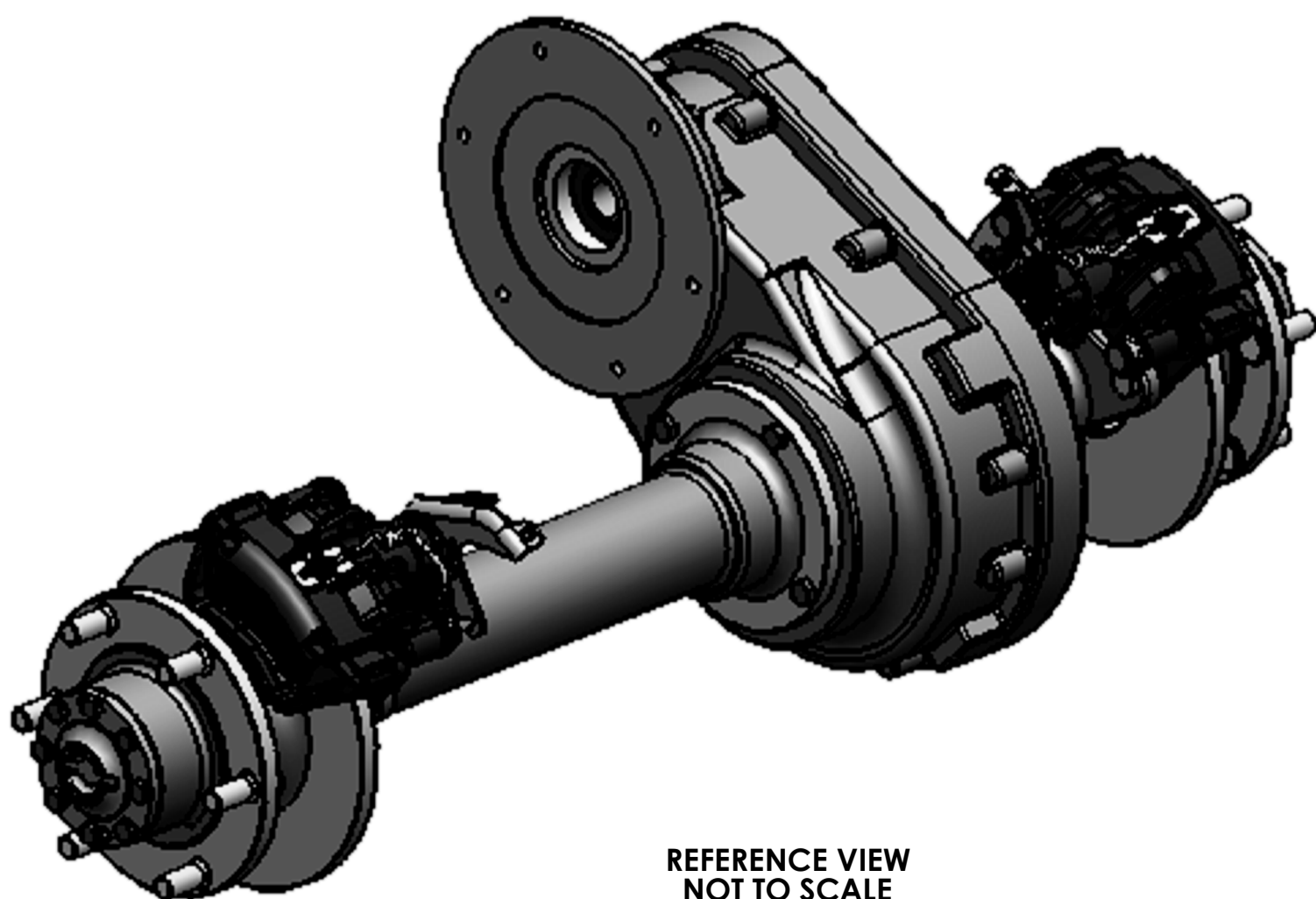
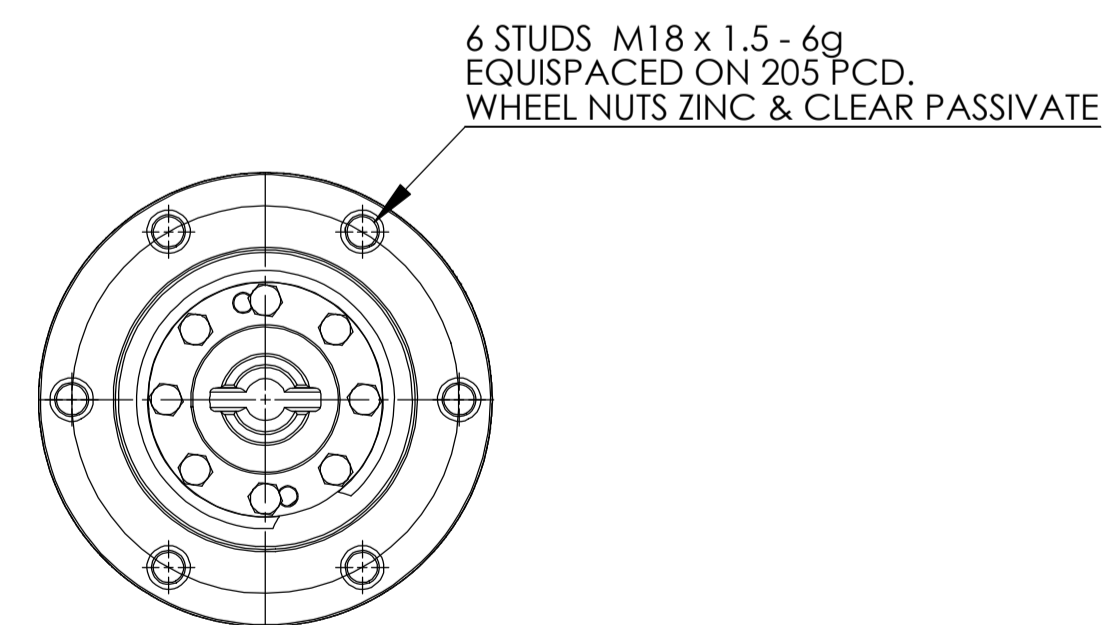
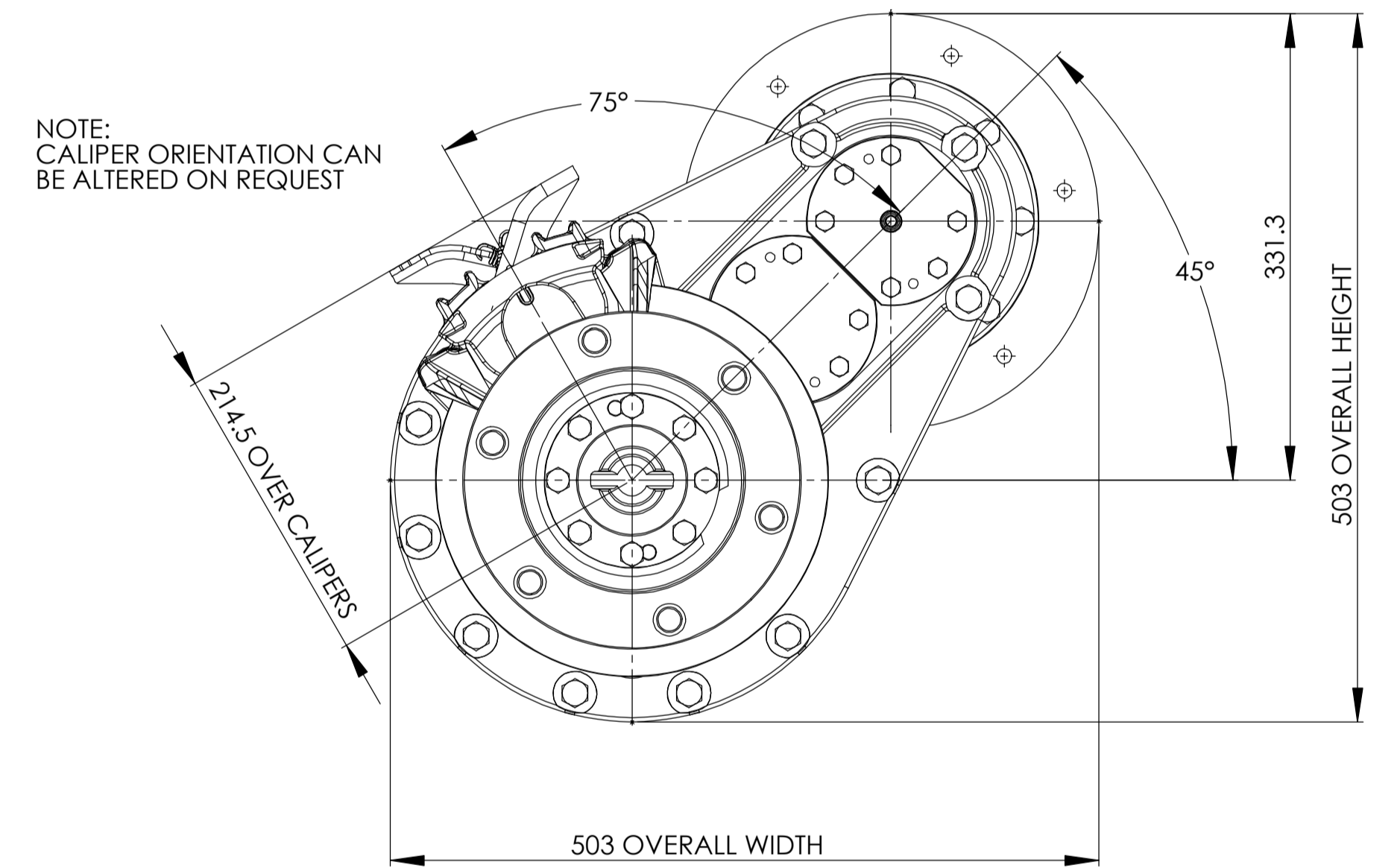
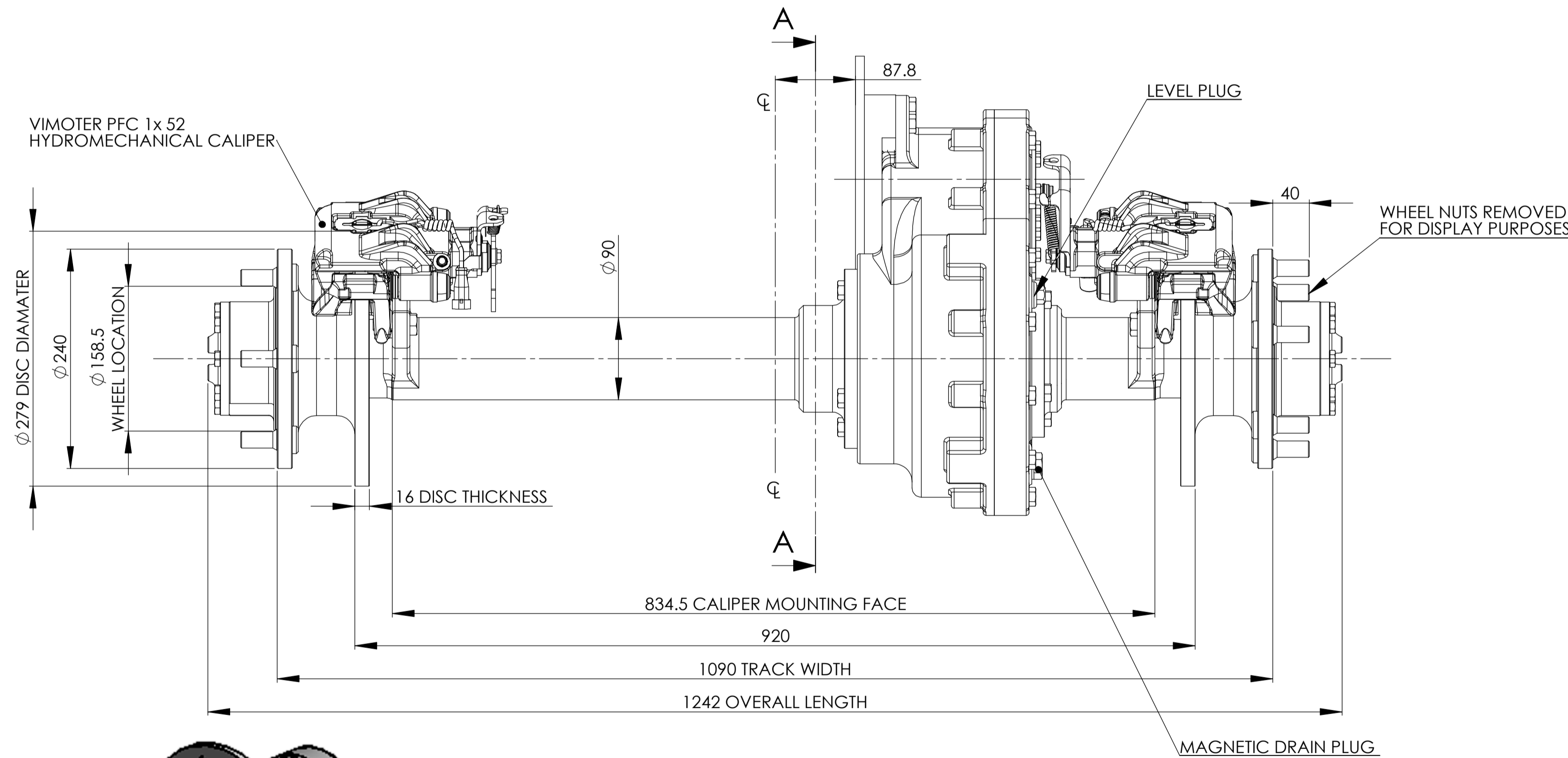
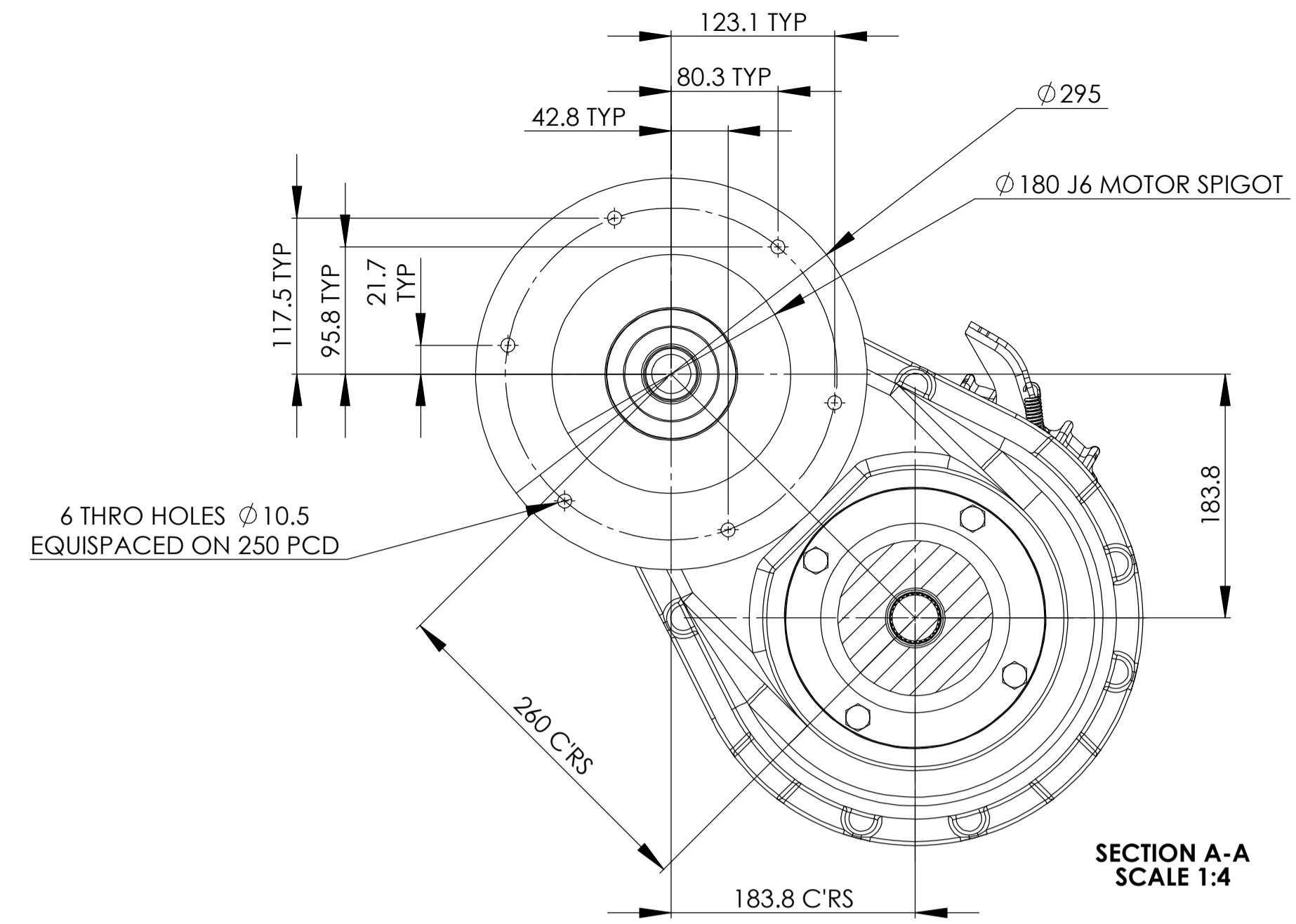
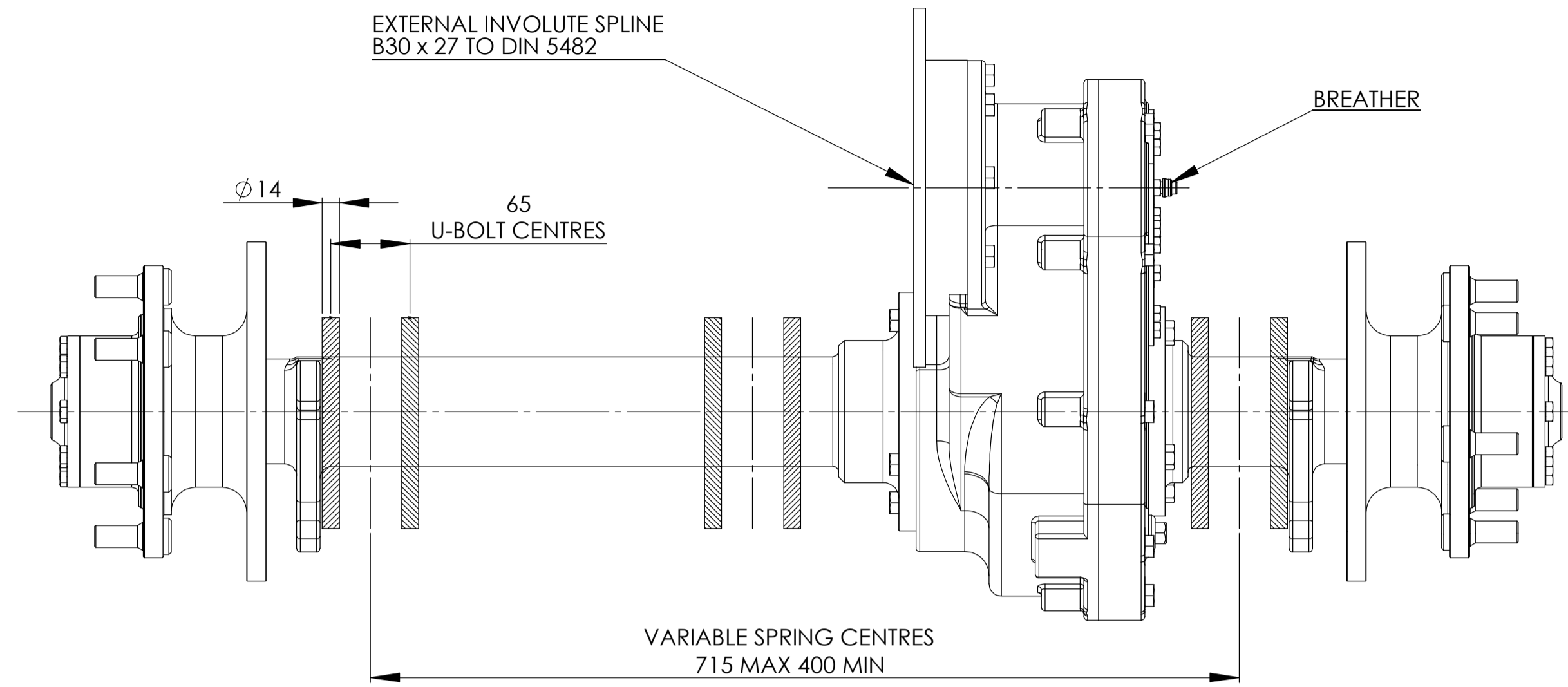


PART No: PT311PB INST



- NOTES:
1. MAXIMUM DYNAMIC LOAD 2800 Kg AT 714 MOUNTING CENTRES.
 2. MAXIMUM INPUT TORQUE 456 Nm.
 3. MAXIMUM INPUT SPEED 4500 RPM.
 4. MAXIMUM OUTPUT TORQUE 8340 Nm.
 5. MAXIMUM SERVICE BRAKE TORQUE 2270 Nm.
 6. MAXIMUM PARK BRAKE TORQUE 1650 Nm.
 7. OVERALL RATIO 18.28:1 AND 15.22:1.
 8. BRAKE FLUID DOT3 OR DOT4 TO SAEJ1703.
 9. WORKING BRAKE FLUID CAN USE FMUSS 116 DOT4, SAEJ1703 & ISO4925.
 10. MAX PERMISSABLE BRAKE PRESSURE 120 BAR.
 11. APPROXIMATE OIL CAPACITY 3.5 LITRES (6.2 PINTS).
 12. PERMISSABLE AMBIENT OPERATING TEMPERATURE -25°C TO +55°C.
 13. GEAR OIL SPECIFICATION SAE 80W-140. AXLE OIL FILLED WITH SAE 80W-140 MEETING AN API-GL5 SERVICE DESIGNATION.
 14. AXLE TO PAINTED TO RAL9005.
 15. ESTIMATED TOTAL DRY WEIGHT 220KG.
 16. ESTIMATED TOTAL WET WEIGHT 225KG.
 17. ESTIMATED MOTOR AND PARKBRAKE COMBINED WEIGHT IS 325KG.

DIMENSIONS IN mm U.S.S. GENERAL M/C FINISH Ra 6.3, THREADS TO MEDIUM FIT (6H/6g), WHOLE DIMENSIONS = ±1mm DECIMAL DIMENSIONS = ±0.25mm ANGULAR DIMENSIONS = ±0.50° BREAK ALL SHARP EDGES 0.5 x 45° PLEASE INFORM OF ANY ERRORS		THIS DOCUMENT IS CONFIDENTIAL AND IS THE PROPERTY OF PRM MARINE LIMITED. IT IS SUPPLIED ON THE EXPRESS CONDITION THAT IT MAY NOT BE LOANED, COPIED OR DISCLOSED TO ANY THIRD PARTY AND MUST BE RETURNED ON DEMAND.		DRAWN: D. MOORE		SIGNED:		ISS: _____		MODIFICATION DESCRIPTION		BY		DATE		MOD No	
SHEET SIZE: A1		MATERIAL:		APPROVED:		SIGNED:		SCALE: 1:4		DATE: 18/02/2014		HEAT TREATMENT:		ISSUE: A		PART No: PT311PB INST	
TITLE: PT311PB INSTALLATION																	

PRM MARINE LIMITED
BARLOW ROAD
COVENTRY
CV2 2LD
Tel: +44 (0)24 7661 7141
Fax: +44 (0)24 7661 1845
Email: design@prm-marine.com
Web: www.prm-marine.com